

Linear Guidance illumination



Waysafe

Safe Passage Engineering

What is safe passage engineering? The emergency services organisations work in extreme risk to life conditions, the need to be able to direct their own or the rescued parties down a safe route or to stop them travelling into an area of danger is imperative. LGi's Waysafe product offers a simple solution to the problem.



Waysafe's illuminated cable can quickly and efficiently be used to mark a safe route or area of danger above or below ground, or even in water. It is simple to deploy and operate, with minimum of training required.

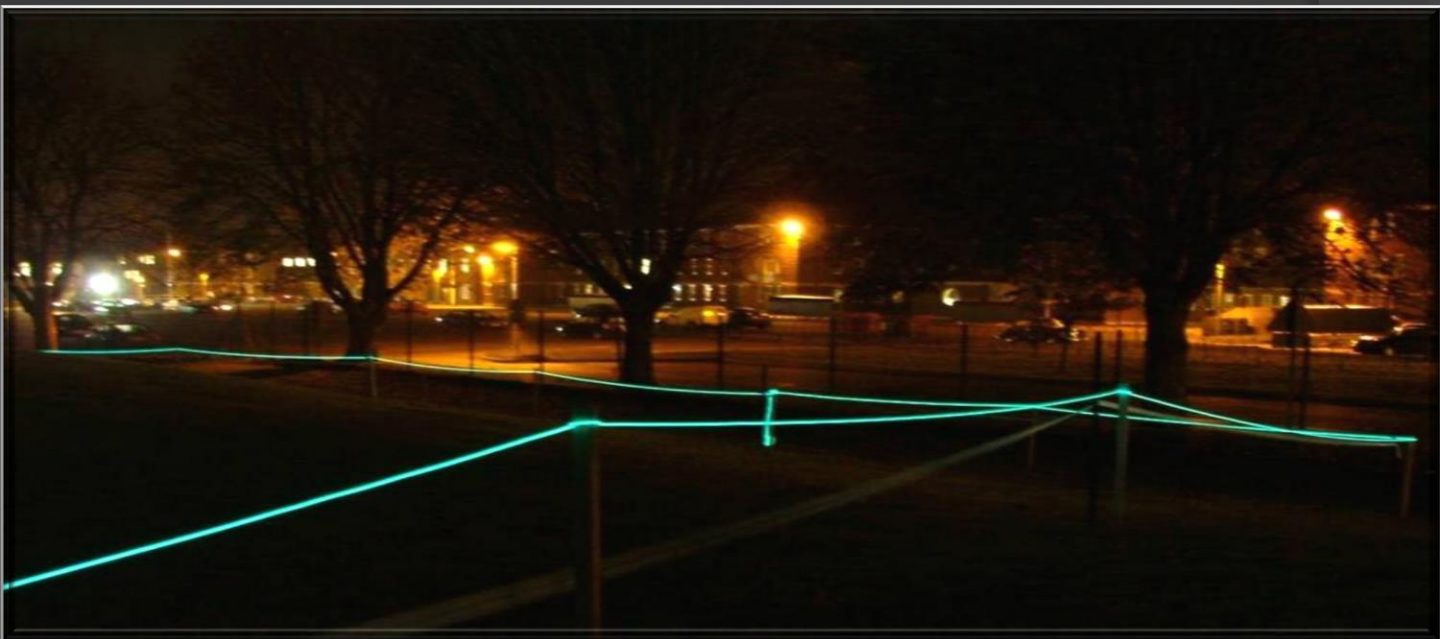
Should the illumination cable be damaged it is simply repaired on site.

All Waysafe models are available in 50m, 100m, 200m, and 300m lengths.

Waysafe Models

Battery Waysafe

The battery powered Waysafe systems mark a significant advance in capability over current route/marketing methodology. Simple and speedy deployment reduces time on task and allows the unit to move more quickly onto the next task. With long battery life, up to 30 hours constant illumination at full brightness or 60 hours on flashing mode.



110v Battery Backup Waysafe

The 110v Battery Backup Waysafe is the simple solution to all your marking/cordoning needs. Users have commented that the lightweight yet robust construction allows it to be used for many different applications. There is the added advantage of up to 15 hours battery backup should the power source fail. In summary, some of the benefits of the 110v Waysafe system are: flexible light source, low running cost, constant illumination.

Waysafe Models continued

110v Waysafe

The 110/240v Waysafe has been developed specifically to accommodate the requirements of the construction industry where the requirement for both portable and plug in power is essential.



The portable Waysafe system's cable is only 5mm in diameter. The standard cable emits a brilliant Blue/Green light along its entire length. This colour is highly visible at night and provides the safety and comfort factors inherent in a clear constant reference point. The product range has been developed specifically to accommodate the requirements for both portable and plug in power.

There are Four standard illumination colours available, these are:- Blue/Green, Red, Lime Green and Orange

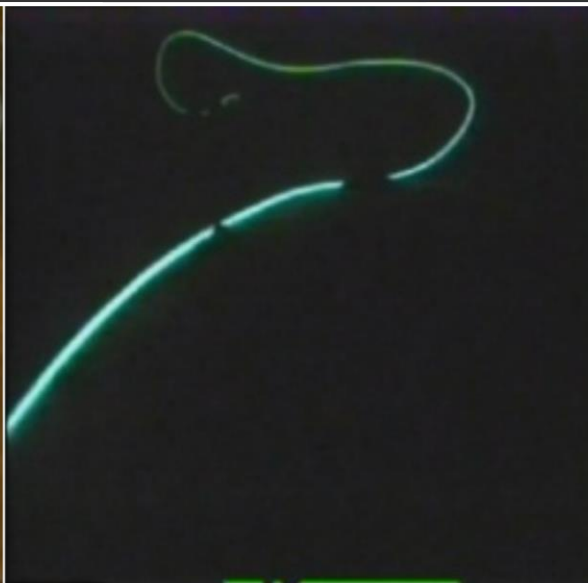


Waysafe Submersible Range

Submersible Waysafe

The Waysafe Submersible was developed to overcome the problem of not having a clear reference point underwater. The unit can be submerged to a depth of 50m, the cable can then be paid out and illuminated.

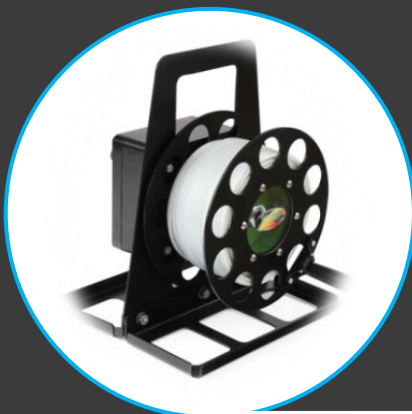
The Waysafe Submersible systems mark a significant advance in capability over current underwater marking methodology. Simple and speedy deployment reduces time on task and allows a clearly visible route to be followed.



The Waysafe Submersible system's cable is only 5mm in diameter. The cable emits a brilliant Blue/Green light along its entire length. This colour is highly visible in dark conditions and provides the safety and comfort factors inherent in a clear constant reference point.

Some of the benefits of the Waysafe Submersible System:

- Flexible Light Source
- Constant Illumination
- Power usage less than a 60w light bulb.
- 130 kilo Tensile Strength
- Long Illumination Time



New Series 3

Waysafe

This new introduction offers more modes of operation ensuring that you get the very best from your Waysafe product.

Illuminated pushbuttons assist in safeguarding against the Waysafe being put away when still powered up. New battery monitoring system ensures that the power level is always indicated, so that you never run out of power. Detachable illumination cable enables you to disconnect from the illumination cable to allow you to recharge your Waysafe.



Communication Waysafe

There are times when you need to work in confined spaces where no communication signal is possible. With the introduction of the communicator Waysafe, you now have the ability to both mark the safe route to and from the incident but also communicate from end to end and also along side the illumination material.



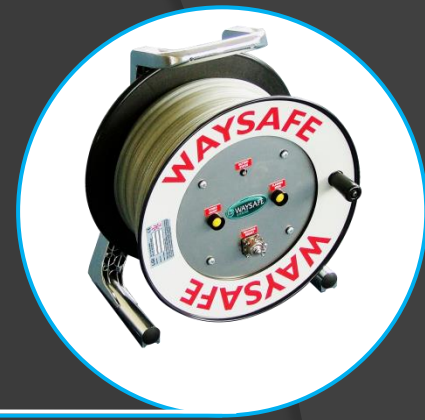
Waysafe Applications

Emergency Services

Scene of Crime, Accidents, Hazard Marking, Water Rescue, Confined Space Search, USAR, Recovery & Rescue

Security & Police

Scene of crime, Public Order, Perimeter protection, Emergency planning, Roads policing.



Construction

Safe marking of routes in tunnels, marking hazards, Railway maintenance activities.

Rail

Marking safe routes in tunnels and on trackside maintenance activities

Military

Bridge edge illumination, Defile marking, marking safe routes, temporary landing strips

Applications Continued

CBRNE

In a CBRNE incident, the most important aspects of command and control is the identification and establishment of the 'clean and dirty line', to protect staff and the public from the risk of contamination, and to provide a safe route for access and egress.



The current method of identifying cordons, access and egress areas, and 'no go' areas, is the use of plastic tape, marked either 'police', 'fire' or 'ambulance'. In low light conditions this tape is often less than satisfactory. Waysafe, a new technology that provides a self-contained, easily deployable, illuminated and robust solution, is an effective improvement in the current situation, which has been proven time and time again.

Specifications

Please see below information relating to the Waysafe weights, size, illumination times etc.

All Waysafe's are supplied with their own Battery Charger, instruction manual and emergency repair kit. In addition we also supply a set of pegs to hold the illumination cable in the ground if required. The ends of the cable are fitted with a Karabiner.

For more information on the Waysafe please do not hesitate to contact the office on the number shown below.



Battery Waysafe

Illumination Durations at 50m

Full Illumination mode: 30 hours
Tensile Strength: 65 kilos
Cable Diameter: 5mm

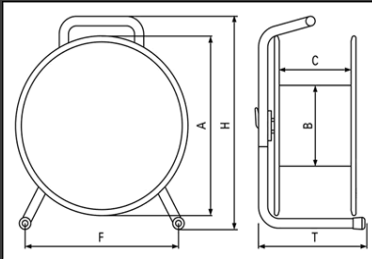
Power Output

Voltage: 12v
Nominal: 14.4v Max

Recharge Information

Recharge time: 3.5 hours
No of Recharges: 600

Dimensions & Weights



A = 235 mm B = 135 mm
C = 110 mm F = 210 mm
H = 300 mm T = 180 mm

Weights

Battery Waysafe: Weight 4.5Kg
Battery Backup: Weight 4.0Kg
110V Waysafe: Weight 4.0Kg

Part Numbers

Battery Waysafe: PWB-50M
Battery backup: PWBBU-50M
110/240V Input: PW110V-50M

IP Rating

IP65

Battery Waysafe

Illumination Durations at 100m

Full Illumination mode: 15 hours
Tensile Strength: 65 kilos
Cable Diameter: 5mm

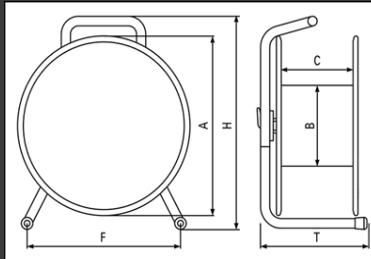
Power Output

Voltage: 12v
Nominal: 14.4v Max

Recharge Information

Recharge time: 3.5 hours
No of Recharges: 600

Dimensions & Weights



A = 310 mm B = 170 mm
C = 112 mm F = 262 mm
H = 370 mm T = 224 mm

Weights

Battery Waysafe: Weight 9.5Kg
Battery Backup: Weight 8.5Kg
110V Waysafe: Weight 5.0Kg

Part Numbers

Battery Waysafe: PWB-100M
Battery backup: PWBBU-100M
110/240V Input: PW110V-100M

IP Rating

IP65

Battery Waysafe

Illumination Durations at 300m

Full Illumination mode: 8 hours
Tensile Strength: 65 kilos
Cable Diameter: 5mm

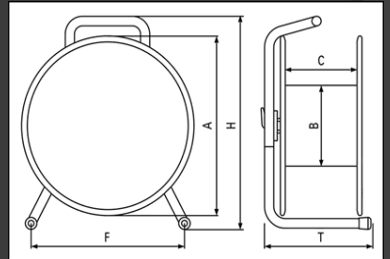
Power Output

Voltage: 12v
Nominal: 14.4v Max

Recharge Information

Recharge time: 3.5 hours
No of Recharges: 600

Dimensions & Weights



A = 310 mm B = 170 mm
C = 112 mm F = 262 mm
H = 370 mm T = 224 mm

Weights

Battery Waysafe: Weight 10.0Kg
Battery Backup: Weight 9.5Kg
110V Waysafe: Weight 9.0Kg

Part Numbers

Battery Waysafe: PWB-300M
Battery backup: PWBBU-300M
110/240V Input: PW110V-300M

IP Rating

IP65



Distributor
Locations 



Waysafe Distributor Locations

Spain, France, Israel, Dubai, Saudi Arabia, Malaysia, Australia, Russia, Ireland, U.S.A. Switzerland.

For more information on our distributors, or if you would liked to be considered, please contact the head office on the number shown below.

Linear Guidance Illumination Limited,
Four Brooks Business Park, Stanier Road, Calne, Wiltshire, SN11 9PP.
Tel: 01249 819 638 Email: sales@lineargi.com www.lineargi.com

